

House & Land Package

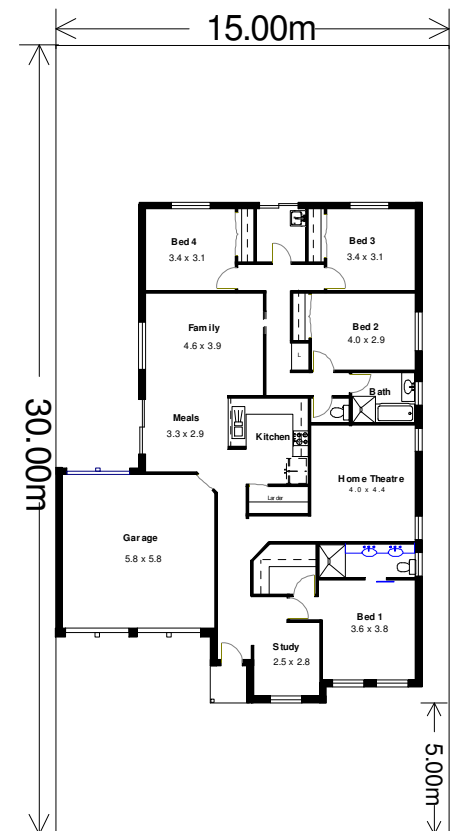
SEAFORD MEADOWS



Elevation for illustration purposes only

Neptune 4 (179) from **\$309,000**

- ✓ *Awning Windows to front façade*
- ✓ *2400mm Ceilings*
- ✓ *Double Garage*
- ✓ *Ceramic Vanities & Toilets*
- ✓ *Boundary Wall Treatment*
- ✓ *Overhead Cupboards & Rangehood*
- ✓ *Stainless steel Appliances*
- ✓ *Walk In Robe & Built in robes*
- ✓ *Insulation to External Walls & Ceilings*
- ✓ *Recycled Water*
- ✓ *Footing Allowance of \$15,000*
- ✓ *Land Purchase Price of \$155,000*



Prices Correct as 11/08/09

Distinctive Bonus Applies

**DISTINCTIVE
HOMES**

127 Marion Road, Richmond, S.A. 5033
Ph 08 8238 0000 Fax 08 8443 3220
Builders Lic No G10420 A.C.N 008 061 902

***Contact: Helen Muscat
0417 854 433***

NOTE: Fees and Taxes associated with land purchase not included in price above.